

CALIFORNIA MONTHLY ANNOUNCEMENTS FEBRUARY 2022



FUN DAYS IN FEBRUARY

Feb. 03: Feed the Birds Day
Feb. 08: Kite-Flying Day
Feb. 14: Valentine's Day
Feb. 23: Banana Bread Day



Chinese New Year 2022 - Year of the Tiger

Chinese New Year 2022 falls on Tuesday, February 1st, 2022, and celebrations culminate with the Lantern Festival on February 15th, 2022.



It is one of the most important holidays in China and Taiwan, and has strongly influenced Lunar New Year celebrations of its 56 ethnic groups. The Chinese New Year is associated with several myths and customs. The festival was traditionally a time to honor deities as well as ancestors.

Learn more about Chinese new year and culture at <https://chinesenewyear.net/>.



It's Tax time!

It is that TAX time of year, you will receive your W2's two ways this year. First a hard copy was mailed January 26th to the address we have on record. Second, you can access an electronic copy in your My Pay Solana account.

WATCH THE LATEST MAINS'L VIDCAST EPISODE TODAY!



Welcome to a new #MainslVidCast episode, where we talk about the culture at Mains'l. This week we welcome David and Samreen, who share their experiences as members of the Mains'l crew. Check it out today:

<https://www.mainsl.com/mainslchat/>

January Compass Award Winner

Michelle Nelson
Marie Stadther

Want to nominate someone? The form can be found and submitted through the website: <https://www.mainsl.com/compass-nomination/>

Top Workplace – in MN and the USA – Thanks to YOU!

Last June Mains'l was recognized as a Top Workplace in MN. Now, thanks to our employees' feedback on the survey taken last spring, your responses have recognized us as a Top Workplace in the **USA**! This is a true honor, as it's entirely based on employee feedback. We appreciate you!



OPEN POSITIONS

Direct Support Professional
Supported Living Services: Part Time & Full time

College Plus Program Specialist

College Plus Redding: Full Time

Payroll Accountant

Admin: Full Time

Ask about our Employee Referral Bonus Program!

<https://mainsl.applytojob.com/apply>

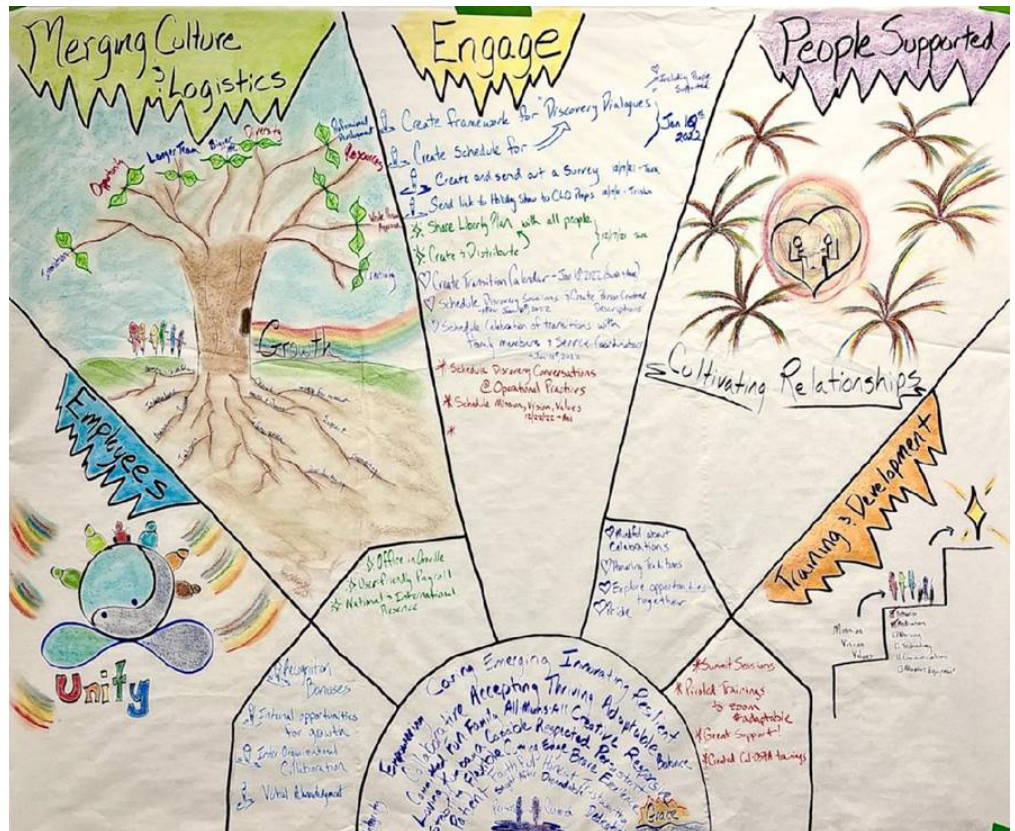
Mains'l Supported Living will be growing!

We are excited to be welcoming some new faces on March 1st!

We will be blending current supports for those folks that are supported by Community Living Options, as their current owner is preparing for retirement.

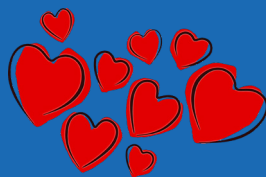
The leadership teams have come together to create a liberty plan to support the continued growth and excellence.

We welcome them with an open heart, open mind and open will!



Valentine's Day!

Friendly Reminder that Valentine's Day is Feb 14th. We invite you to dress in Red or Pink and celebrate with Mains'!



Please send pictures to Recognition@mainsl.com

Check out the attached flyers!

- Wellness: Reducing your stress during American Heart Month
- Body and Mind Self Care Tips