



PATHWAYS TO PERSON CENTERED PRACTICES

HOW MAINS'L CAN HELP LEAD YOUR ORGANIZATION INTO THE FUTURE

Person Centered Thinking and Practices helps individuals and organizations shift their lenses toward identifying what is important to each individual person. It's a transformative paradigm shift that truly **empowers organizations to respond to the hopes and dreams of the people they support.**

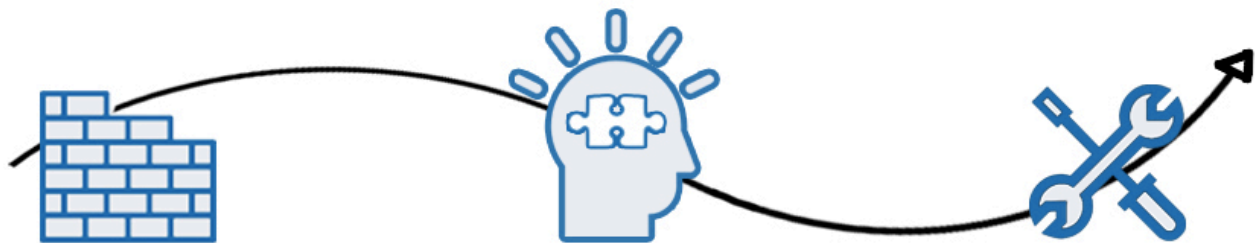
OUR NAVIGATOR AND TRAINING TEAM

Our Navigators and Trainers are highly-experienced, certified in their field, and passionate about helping organizations like yours adopt person centered practices. They'll be here each step of the way to guide, advise and partner with you on your journey. All Trainers are certified by The Learning Community for Person Centered Practices.



YOUR ORGANIZATION'S PATHWAY TO PERSON CENTERED PRACTICES

Call us to customize training to your organization's unique needs and desires. This sample plan is meant to give you a taste of what's possible.



LAYING THE FOUNDATION

Person Centered Thinking training grounds your team in this transformative new way of thinking.

BUILDING THE COMPETENCY

Our various specialized trainings, like Person Centered Outcomes and Coaches Cohort, help your organization build internal bandwidth and know-how.

HONING THE SKILLS

After your training is completed, we can continue to support your organization with consultation, problem-solving, and ongoing skill building.



THE BUSINESS OF
HOPES & DREAMS

Ready to get started? Go to mainsl.com/person-centered-supports/ or call 763-494-4553



THE BUSINESS OF
HOPES & DREAMS

A MENU OF OUR PCT TRAININGS, CONSULTATION AND SUPPORTS

LAYING THE FOUNDATION

PERSON CENTERED THINKING TRAINING®

LENGTH: Two days

This foundational yet profound training is guaranteed to provoke meaningful changes in the way you and your employees see the world. It's interactive and focuses on empowering people to have control over the life they desire, while addressing issues of health and safety. The training is designed for employees at all levels, especially those in a supervisory role, and can be offered at our office or a location of your choosing.

BUILDING THE STRENGTH (2-Day PCT required; we'll help get you scheduled)

PERSON CENTERED PLAN FACILITATION: "A PICTURE OF A LIFE"

LENGTH: Two days

This intensive training focuses on mastering and applying Person Centered Thinking and Planning tools to help people "paint a picture of their life." During this training you will actively engage in planning with a person who uses services, where you'll use person centered skills and graphic facilitation, to help capture the picture of the life they want to live.

PERSON CENTERED OUTCOMES

LENGTH: 2.5 hours

You'll leave this session with a strong understanding of how to develop meaningful outcomes for people of all abilities. You'll learn best practices on how to organize the information, what the regulations say about them, and how they can impact the lives of those you support.

COACHES COHORT

LENGTH: 6 days

Mains'l hosts a Coaches Cohort group every year, offering an opportunity to collaborate with other like-minded organizations and PCT coaches, working to become confident, competent, and consistent when applying person centered practices.

HONING THE SKILLS

ONGOING SUPPORT AND CONSULTATION

LENGTH: Customized to your needs

The journey towards person centered practices doesn't end when the training is done. We're here to serve your organization on an ongoing basis with follow up consultation, problem-solving and updates, as rules, regulations and best practices evolve over time.

>> PACKAGE OUR TRAININGS AND SAVE! <<

We believe our trainings have the biggest impact together. For the 2019 season, individual participants will receive **20% off when registering** for any additional classes, or register 4 people from your organization and get the 5th person free! Organizations can also take advantage of a **free 45-minute consultation** to discover what they may want to accomplish to reach desired outcomes. We will work with you to develop a package that works for your organization.