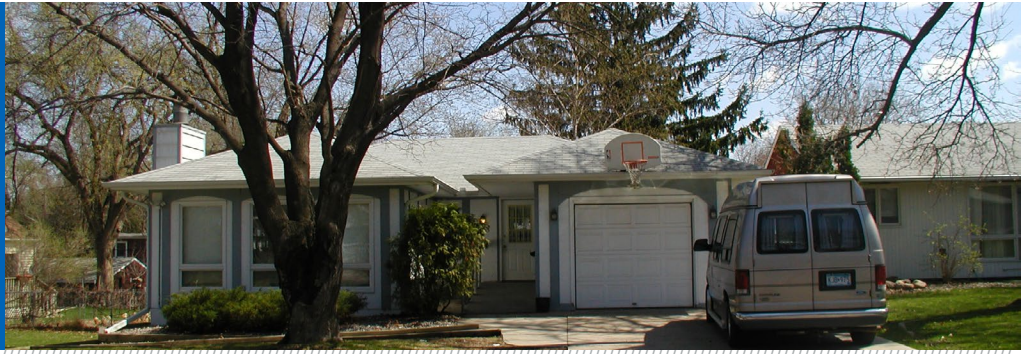


HELPING
YOU
MOVE
FORWARD.











HOUSING W/SUPPORT OPPORTUNITY

If you're looking for **an accessible home in the St. Louis Park area, this may be the place for you!**

The home is located in a quiet neighborhood, and a large fenced backyard. You will be supported by upbeat, positive staff members, who have been trained in person-centered thinking.

Mains'l has a vision that all people live where and with whom they choose, living a life of meaning and purpose. If this sounds like something you're looking for, please contact us for a tour!

Home Ammenities:

-  Handicap accessible home
-  2 full bathrooms
-  Close to bus line
-  Large fenced back yard
-  Quiet neighborhood
-  Accessible transportation on site provided for activities and appointments
-  Close to shopping mall, lots of restaurants
-  Parks nearby

Do you like to:

- Laugh and have fun?
- Enjoy the company of roommates, yet like to do your own thing?
- Be close to neighborhood necessities and activities?



Characteristics of current roommates:

- Friendly
- Enjoy going out with roommates
- Like to watch movies and TV
- Can walk away from situations when someone is having a rough time, and not take it personally
- Guys currently live in the home (ages 35-71), but are open to female roommates
- Have a house cat (who primary stays in lower level)

Want to Learn More?

Contact Sara Villnow, Customized Options Specialist, 612-876-6285 or smvillnow@mainsl.com



THE BUSINESS OF
HOPES & DREAMS